

Kirtland Local Schools 2015-2016 State Report Card



[Overview](#)
[Achievement](#)
[Progress](#)
[Gap Closing](#)
[Graduation Rate](#)
[K-3 Literacy](#)
[Prepared for Success](#)

DISTRICT GRADE

Coming in
2018

DISTRICT DETAILS

[VIEW SCHOOLS](#)


Financial Data

These measures answer several questions about spending and performance. How much is spent, the source of the revenue and how do these measures compare across districts?

[VIEW DATA](#)


Achievement

The Achievement component represents the number of students who passed the state tests and how well they performed on them.

Performance Index

82.1%..... **B**

Indicators Met

79.3%..... **C**

COMPONENT GRADE

B

[VIEW MORE DATA](#)
[VIEW GIFTED DATA](#)


Progress

The Progress component looks closely at the growth that all students are making based on their past performances.

Value-Added

Overall..... **C**

Gifted..... **C**

Lowest 20% in Achievement..... **C**

Students with Disabilities..... **D**

COMPONENT GRADE

C

[VIEW MORE DATA](#)


Gap Closing

The Gap Closing component shows how well schools are meeting the performance expectations for our most vulnerable populations of students in English language arts, math and graduation.

Annual Measurable Objectives

75.0%..... **C**

COMPONENT GRADE

C

[VIEW MORE DATA](#)


Graduation Rate

The Graduation Rate component looks at the percent of students who are successfully finishing high school with a diploma in four or five years.

Graduation Rates

98.0% of students graduated in 4 years..... **A**

100.0% of students graduated in 5 years..... **A**

COMPONENT GRADE

A

[VIEW MORE DATA](#)


K-3 Literacy

The K-3 Literacy component looks at how successful the school is at getting struggling readers on track to proficiency in third grade and beyond.

K-3 Literacy Improvement

0.0%..... **F**

COMPONENT GRADE

F

[VIEW MORE DATA](#)


Prepared for Success

Whether training in a technical field or preparing for work or college, the Prepared for Success component looks at how well prepared Ohio's students are for all future opportunities.

COMPONENT GRADE

B

[VIEW DATA](#)

Achievement



The Achievement component represents the number of students who passed the state tests and how well they performed on them.

COMPONENT GRADE

B

GRADE

B

Performance Index

The Performance Index measures the test results of every student, not just those who score proficient or higher. There are six levels on the index and districts receive points for every student in each of these levels. The higher the achievement level the more the points awarded in the district's index. This rewards schools and districts for improving the performance of all students, regardless of achievement level.

Performance Index

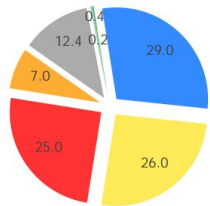


82.1%

98.5 of a possible 120.0

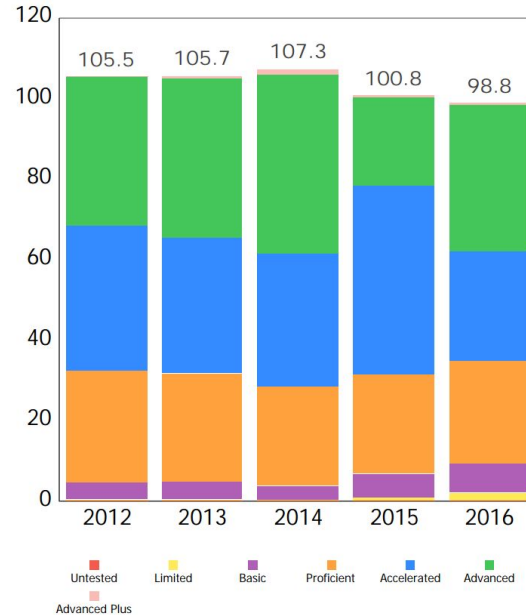
- A = 90.0 - 100.0%
- B = 80.0 - 89.9%
- C = 70.0 - 79.9%
- D = 50.0 - 69.9%
- F = 0.0 - 49.9%

Achievement Level	Pct of Students		Points for this Level	=	Points Received
Advanced Plus	0.4	x	1.3	=	0.6
Advanced	29.0	x	1.2	=	34.8
Accelerated	26.0	x	1.1	=	28.6
Proficient	25.0	x	1.0	=	25.0
Basic	12.4	x	0.6	=	7.5
Limited	7.0	x	0.3	=	2.1
Untested	0.2	x	0.0	=	0.0
					<u>98.5</u>



- Advanced Plus
- Advanced
- Accelerated
- Proficient
- Limited
- Basic
- Untested

Performance Index Trend



- Advanced Plus
- Limited
- Basic
- Proficient
- Accelerated
- Advanced

GRADE

C

Indicators Met

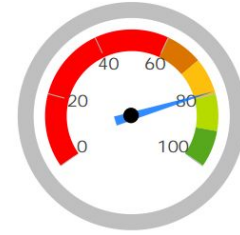
Indicators Met measures the percent of students who have passed state tests. It also includes the gifted indicator. Test results are reported for each student in a grade and subject.

Indicators Met %

79.3%

23 out of 29

A = 90.0 - 100.0%
 B = 80.0 - 89.9%
 C = 70.0 - 79.9%
 D = 50.0 - 69.9%
 F = 0.0 - 49.9%



Grades 3-5

3rd Grade	English Language Arts	74.0%	✓
	Mathematics	91.9%	✓
4th Grade	English Language Arts	80.9%	✓
	Mathematics	92.6%	✓
	Social Studies	92.6%	✓
5th Grade	English Language Arts	83.5%	✓
	Mathematics	75.3%	✓
	Science	83.5%	✓

Grades 6-8

6th Grade	English Language Arts	68.6%	✗
	Mathematics	82.5%	✓
	Social Studies	82.9%	✓
7th Grade	English Language Arts	68.1%	✗
	Mathematics	68.5%	✗
8th Grade	English Language Arts	68.7%	✗
	Mathematics	86.4%	✓
	Science	90.9%	✓

GIFTED INDICATOR ✗

High School

OGT, 11th Graders	Mathematics	97.6%	✓
	Reading	98.8%	✓
	Science	93.9%	✓
	Social Studies	95.1%	✓
	Writing	98.8%	✓
HS	Algebra I	79.1%	✓
	Biology	90.2%	✓
	English I	82.7%	✓
	English II	77.2%	✗
	Geometry	81.6%	✓
	Government	85.1%	✓
	History	95.5%	✓

Progress



The Progress component looks closely at the growth that all students are making based on their past performances.

COMPONENT GRADE

C

GRADE

C

Overall

This measures the progress for all students in math, ELA, science and social studies using tests in grades 4-8 and some end-of-course exams.

GRADE

C

Gifted Students

This measures the progress for students identified as gifted in reading, math, science, social studies and/or superior cognitive ability.

GRADE

C

Students in the Lowest 20% in Achievement

This measures the progress for students identified as the lowest 20% statewide in reading, math, science or social studies achievement.

GRADE

D

Students with Disabilities

This measures the progress for students with disabilities.

Progress Details

These tables show the Progress scores by test grade and subject for students in grades 4-8 and some end-of-course tests, and includes up to three years of data as available.

Test Grade	Progress Score			
	English Language Arts	Mathematics	Social Studies	Science
All Grades	-1.88	0.42	-3.45	0.58
4th Grade	0.83	-1.90		
5th Grade	-3.51	-1.75		-6.14
6th Grade	-8.81	4.09	-3.45	
7th Grade	4.41	-2.50		
8th Grade	-1.28	0.33		6.07

Test Grade		Progress Score
High School	English I	4.43
	English II	2.37

Test Grade		Progress Score
High School	Algebra I	3.65
	Geometry	0.57

Although Progress scores are not assigned letter grades at this level of detail, the grading scale applied at the Overall (All Students, All Tests) level is:

A = 2.00 and up
 B = 1.00 to 1.99
 C = -1.00 to 0.99
 D = -2.00 to -1.01
 F = below -2.00

Gap Closing



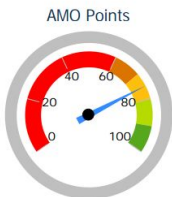
The Gap Closing component shows how well schools are meeting the performance expectations for our most vulnerable populations of students in English language arts, math and graduation.

COMPONENT GRADE
C

GRADE
C

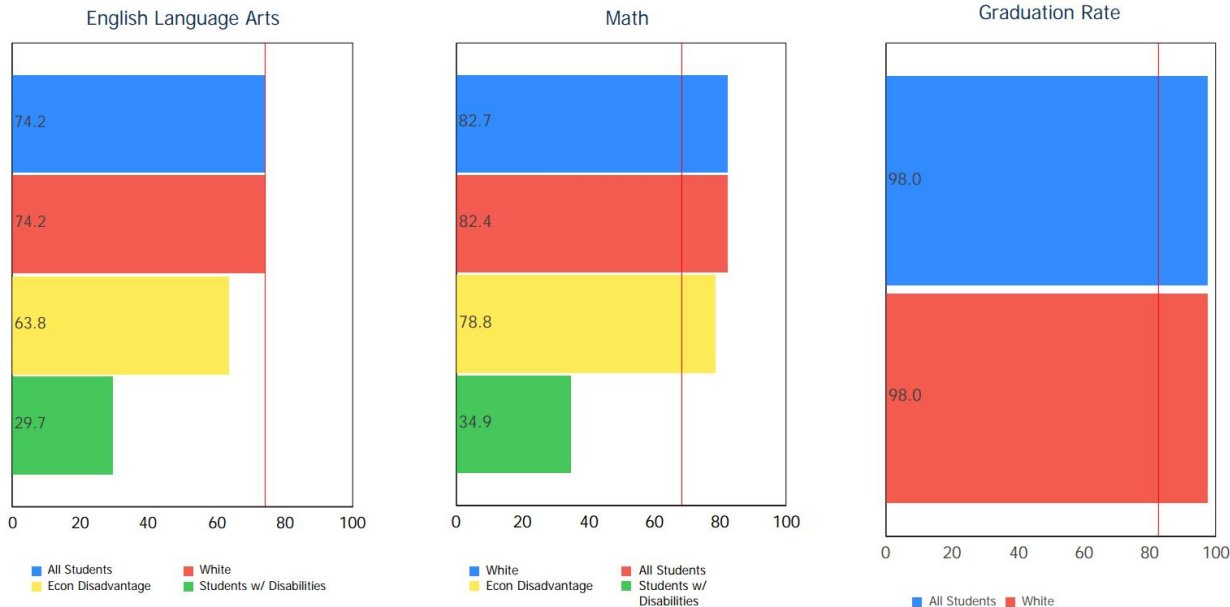
Annual Measurable Objectives

Annual Measurable Objectives (AMOs) compare the performance of student groups to a state goal which is displayed as the red line in the following charts. These charts show how well each group achieves that goal in reading, math and graduation – and emphasize any achievement gaps that exist between groups. The ultimate goal is for all groups to achieve at high levels.



75.0%

A = 90.0 - 100.0%
B = 80.0 - 89.9%
C = 70.0 - 79.9%
D = 60.0 - 69.9%
F = 0.0 - 59.9%



The red line on each graph identifies the Annual Measurable Objective. The 2016 AMO for ELA is 74.2%, for Math is 68.5%, and for Graduation Rate is 82.8%. Subgroups with fewer than 30 students are not rated and do not appear on the graphs.

Graduation Rate



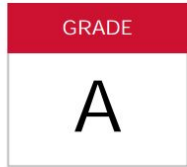
The Graduation Rate component looks at the percent of students who are successfully finishing high school with a diploma in four or five years.

COMPONENT GRADE

A

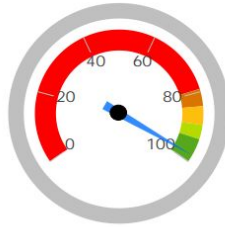
4-Year Graduation Rate

The 4-year graduation rate applies to the Class of 2015 who graduated within four years, i.e. students who entered the 9th grade in 2012 and graduated by 2015.

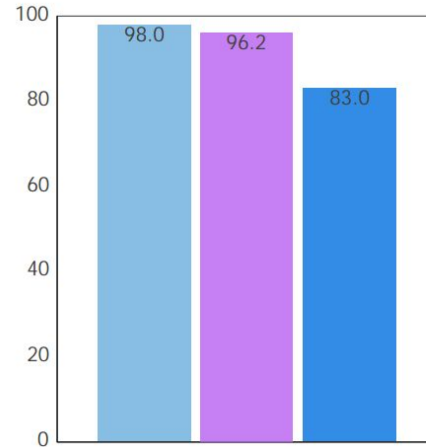


98.0%

A = 93.0 - 100.0%
B = 89.0 - 92.9%
C = 84.0 - 88.9%
D = 79.0 - 83.9%
F = 0.0 - 78.9%

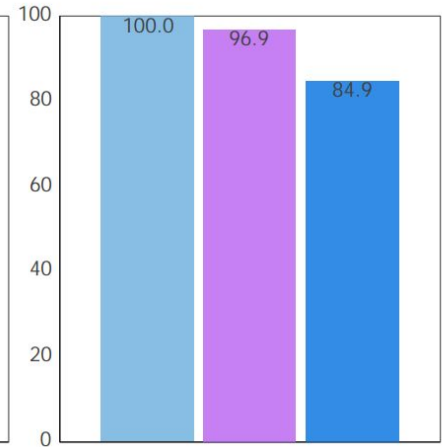


4-Year Rate



District
State Average
Similar Districts

5-Year Rate



District
State Average
Similar Districts

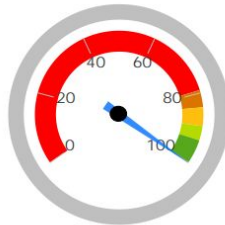
5-Year Graduation Rate

The 5-year graduation rate applies to the Class of 2014 who graduated within five years, i.e. students who entered the 9th grade in 2011 and graduated by 2015.



100.0%

A = 95.0 - 100.0%
B = 90.0 - 94.9%
C = 85.0 - 89.9%
D = 80.0 - 84.9%
F = 0.0 - 79.9%



K-3 Literacy



The K-3 Literacy component looks at how successful the school is at getting struggling readers on track to proficiency in third grade and beyond.

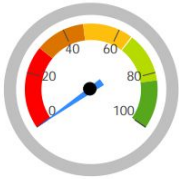
COMPONENT GRADE

F

GRADE

F

K-3 Literacy Improvement



0.0%

-4 out of 25

A = 81.4 - 100.0%
 B = 62.6 - 81.3%
 C = 43.8 - 62.5%
 D = 25.0 - 43.7%
 F = 0.0 - 24.9%

In Your District...

< 10 kindergarten students were not on-track last year.

NC of those students improved to on-track in 1st grade.

< 10 first grade students were not on-track last year.

NC of those students improved to on-track in 2nd grade.

< 10 second grade students were not on-track last year.

NC of those students improved to on-track in 3rd grade.

< 10 third grade students were not on-track this year.

NC of those students reached proficiency on the 3rd grade OAA.

Details of Measure

Not On-Track at Point A		Improving to On-Track at Point B	
Kindergarten Reading Diagnostic, School Year 2014 - 2015	< 10	to	1st Grade Reading Diagnostic, School Year 2015 - 2016 < 10
1st Grade Reading Diagnostic, School Year 2014 - 2015	< 10	to	2nd Grade Reading Diagnostic, School Year 2015 - 2016 < 10
2nd Grade Reading Diagnostic, School Year 2014 - 2015	< 10	to	3rd Grade Reading Diagnostic, School Year 2015 - 2016 < 10
3rd Grade Reading Diagnostic, School Year 2015 - 2016	< 10	to	3rd Grade Reading OST, School Year 2015 - 2016 < 10
Deduction for 3rd graders who did not pass OST and were not on a Reading Improvement and Monitoring Plan			NC
Totals	25		(4)

Percentage On-Track in Reading Diagnostic



This chart shows the overall percentage of students that were on-track/not-on-track for each grade level reading diagnostic in 2015-2016.

Third Grade Reading Guarantee

Ohio's Third Grade Reading Guarantee ensures that students are successful in reading before moving on to fourth grade. Schools must provide supports for struggling readers in early grades. If a child appears to be falling behind in reading, the school will immediately start a Reading Improvement and Monitoring Plan. The program ensures that every struggling reader gets the support he or she needs to learn and achieve.

Students have multiple opportunities to meet promotion requirements including meeting a minimum promotion score on the reading portion of the state's third grade English language arts test given twice during the school year. Students have an additional opportunity to take the state assessment in the summer, as well as a district-determined alternative assessment.

How many third graders met the Third Grade Reading Guarantee requirements for promotion to 4th grade? **100.0%**

How many third graders scored proficient on the state Reading test? **74.0%**

Prepared for Success



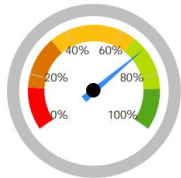
Whether training in a technical field or preparing for work or college, the Prepared for Success component looks at how well prepared Ohio's students are for all future opportunities.

COMPONENT GRADE

B

COMPONENT GRADE

B



70.0%

A = 85.0% - 100.0%
 B = 65.0% - 84.9%
 C = 34.0% - 64.9%
 D = 15.0% - 33.9%
 F = 0.0% - 14.9%

Number of students that earned a remediation free score on all parts of the ACT or SAT, earned an honors diploma, and/or earned an industry-recognized credential

Number of Students	Point Value	Points Earned
121	1	121.0

The number of "bonus" students that count an additional 0.3 bonus points each, because they did the above and also earned a 3 or higher on at least one AP exam; earned a 4 or higher on at least one IB exam; and/or earned at least three college credits before leaving high school

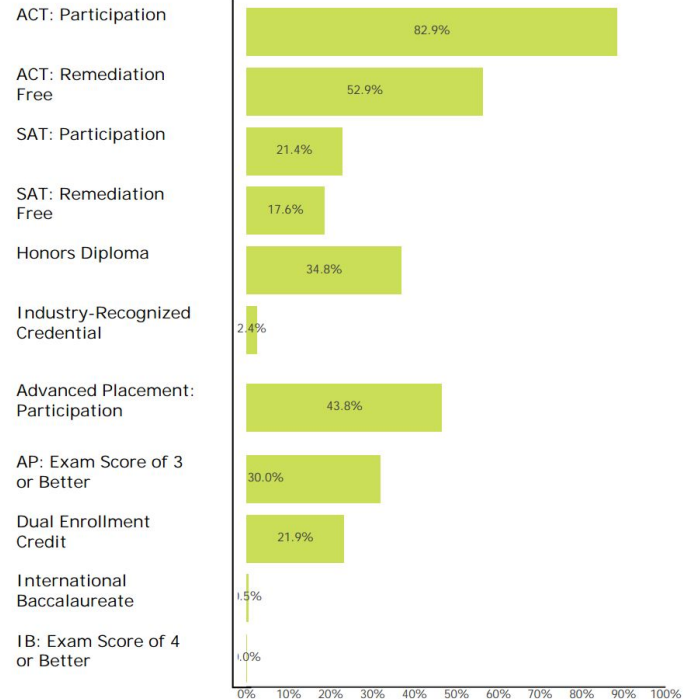
87	0.3	26.1
----	-----	------

Total Points: 147.1

Graduation Cohort: 210

Percentage: 70.0%

How Prepared were Your 2014 and 2015 Graduating Classes?



Note: These data represent students in the 4-year and 5-year graduation rates, i.e. students who entered 9th grade in 2011 and 2012.

2015 - 2016 Report Card for Kirtland Local School District

 [View Printable PDF](#)

Overview	Achievement	Progress	Gap Closing	Graduation Rate	K-3 Literacy	Prepared for Success
--------------------------	-----------------------------	--------------------------	-----------------------------	---------------------------------	------------------------------	--------------------------------------



Superintendent: William R. Wade
Address: 9252 Chillicothe Rd
Kirtland OH 44094-9298

Phone: (440) 256-3360
County: Lake

[BACK TO OVERVIEW](#)

Your District's Schools

School	Achievement	Progress	Gap Closing	Graduation Rate	K-3 Literacy	Prepared for Success
Kirtland Elementary School	B	D	A	NR	F	NR
Kirtland High School	B	A	A	A	NR	B
Kirtland Middle School	C	C	F	NR	NR	NR

Gap Closing



The Gap Closing component shows how well schools are meeting the performance expectations for our most vulnerable populations of students in English language arts, math and graduation.

COMPONENT GRADE

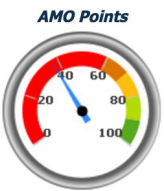
F

GRADE

F

Annual Measurable Objectives

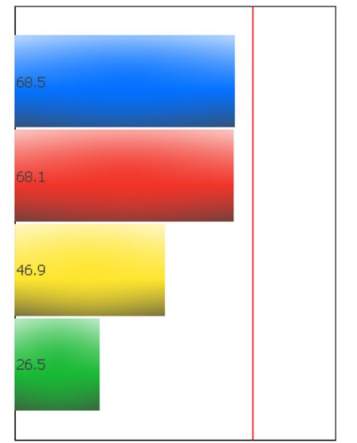
Annual Measurable Objectives (AMOs) compare the performance of student groups to a state goal which is displayed as the red line in the following charts. These charts show how well each group achieves that goal in ELA, math and graduation – and emphasize any achievement gaps that exist between groups. The ultimate goal is for all groups to achieve at high levels.



37.5%

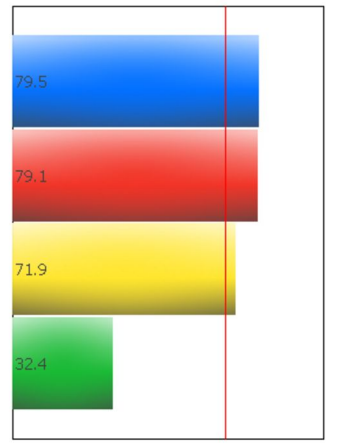
- A = 90.0 - 100.0%
- B = 80.0 - 89.9%
- C = 70.0 - 79.9%
- D = 60.0 - 69.9%
- F = 0.0 - 59.9%

English Language Arts



■ All Students ■ White
 ■ Econ Disadvantage ■ Students w/ Disab...

Math



■ White ■ All Students
 ■ Econ Disadvantage ■ Students w/ Disab...

Graduation Rate

This school does not have an Annual Measurable Objective for Graduation Rate because there were not enough students to evaluate.

The red line on each graph identifies the Annual Measurable Objective. The 2016 AMO for ELA is 74.2%, for Math is 68.5%, and for Graduation Rate is 82.8%. Subgroups with fewer than 30 students are not rated and do not appear on the graphs.

Gifted Students



The Gifted Students data and Indicator highlight the opportunities for and performance of gifted students. The dashboard answers several questions: How many students are identified as gifted and in what categories? How many of those students are receiving gifted services? How well are those gifted students performing? The Gifted Indicator measures whether opportunity and performance expectations are being met for gifted students.

INDICATOR
Not Met

ALL ACHIEVEMENT

Gifted Indicator

- Overview
- Performance Index
- Gifted Inputs

The Gifted Indicator is derived from three components: Gifted Value Added, the Performance Index for gifted students, and a Gifted Inputs score.

Gifted Value Added

Value Added Grade: C
Enrollment: 1,146
Value Added Met? Met

Districts must earn a Gifted Value Added grade of C or better to meet the Gifted Value Added component. A grade of NR results in Not Met if the district has an Enrollment of 600 or more.

Gifted Performance Index

Performance Index: 114.172
Performance Index Met? Not Met

Districts with at least 10 unique students in the Gifted Performance Index calculation must score 116.0 or better to meet the Gifted Performance Index component.

Gifted Inputs

Total Points: 77.0
Gifted Inputs Met? Met

Points are earned based on identification and services provided to gifted students. Districts must earn at least 60 points out of a possible 100 to meet the Gifted Inputs component.

Gifted Indicator Final Result

The Gifted Indicator is Met if none of the three components are Not Met. Gifted Inputs alone cannot determine the Gifted Indicator, however; if both the Value Added and Performance Index components are NC, then the Gifted Indicator is also NC.

INDICATOR
Not Met

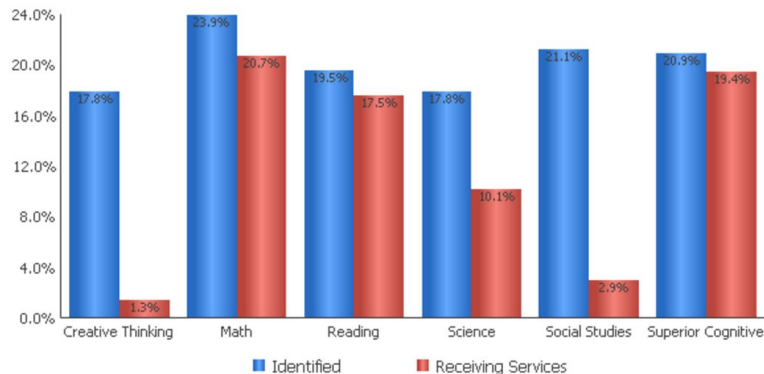
[Click here](#) for a complete description of how the Gifted Indicator is determined.

Additional Information on Identification and Services

- Identification and Services
- Screening and Acceleration

All Grades

This chart shows the percentage of all enrolled students that are identified as gifted and that are receiving gifted services.



Note: Students may be identified in more than one category

Gifted Indicator

Overview

Performance Index

Gifted Inputs



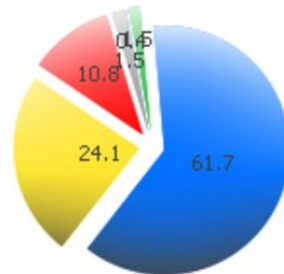
95.1%

114.172 of a possible 120.0

A = 90.0 - 100.0%
 B = 80.0 - 89.9%
 C = 70.0 - 79.9%
 D = 50.0 - 69.9%
 F = 0.0 - 49.9%

The Performance Index calculation for gifted students. Only tests taken by students identified as gifted in that subject (e.g. gifted in Math and taking the Math test), or taken by students identified with Super Cognitive abilities regardless of test subject are included.

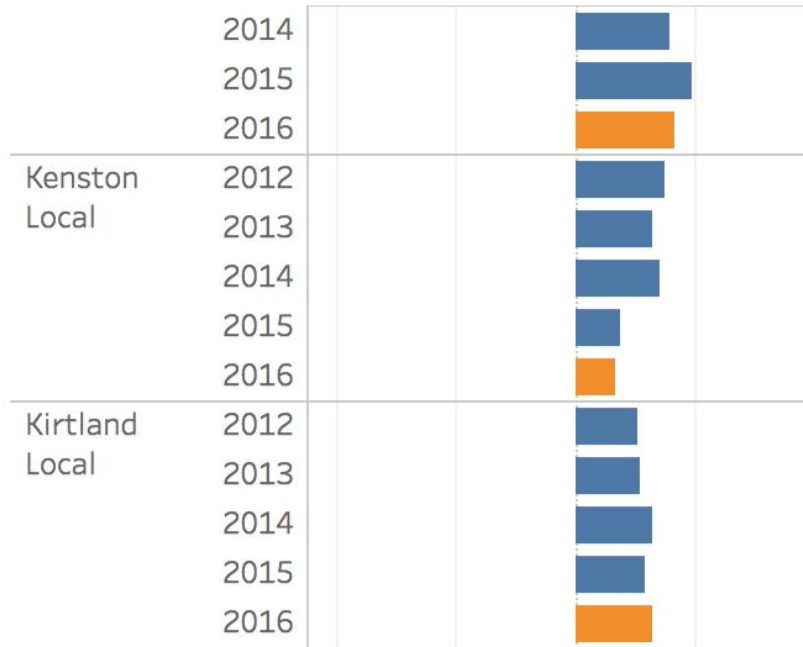
Achievement Level	Pct of Students		Points for this Level	=	Points Received
Advanced Plus	1.5	x	1.3	=	2.0
Advanced	61.7	x	1.2	=	74.1
Accelerated	24.1	x	1.1	=	26.5
Proficient	10.8	x	1.0	=	10.8
Basic	1.5	x	0.6	=	0.9
Limited	0.0	x	0.3	=	0.0
Untested	0.4	x	0.0	=	0.0
					114.172



■ Advanced Plus
■ Advanced
■ Accelerated
■ Proficient
■ Limited
■ Basic
■ Untested

School District Performance, 2012-2016

Select one or more counties from the list below to see how school districts there have performed, relative to their peers. Bars to the left indicate poorer performance; to the right, better performance.



	Reading				MATH				SOCIAL STUDIES (4TH/6TH)/SCIENCE (5TH/8TH)			
Grade	District %	Similar District %	State %	Required % for Passing	District %	Similar District %	State %	Required % for Passing	District %	Similar District %	State %	Required % for Passing
3rd (6)	74	74.5	54.9	68	91.9	84.7	65.8	73				
4th (1)	80.9	78.6	57.5	75	92.6	88.9	69.2	72	92.6	92.4	75.8	75
5th	83.5	79	60.2	73	75.3	81.5	62.4	74	83.5	85.1	67.5	71
6th (2)	68.6	73.3	54	74	82.5	77	56.7	74	82.9	83.3	61.2	68
7th (3)	68.1	73.2	53.6	74	68.5	77	55.3	74				
8th (2)	68.7	67.1	47.5	74	86.4	78.5	52.7	66	90.9	84.4	64.9	70

- [Similar District Comparison](#) (9 out of 16)
- [Report Card Comparison Data](#)
 - GPA from Cleveland PD - 2.2 which ranked us 84th out of 606 (top 15% of State)
 - Top (or tied for top) in 9 of 16 measurements in Lake County
 - Competitive with top districts in Cuyahoga and Geauga County

2014-2015

2015-2016

CONTENT	INDICATOR MET %	TEST	EXAM	INDICATOR MET %	TEST	Change
Grade 3 English language arts	80%	OAA	Grade 3 English language arts	68%	OST	New Test
Grade 3 math	65%	PARCC	Grade 3 math	73%	OST	8%
Grade 4 English language arts	69%	PARCC	Grade 4 English language arts	75%	OST	6%
Grade 4 math	64%	PARCC	Grade 4 math	72%	OST	8%
Grade 4 social studies	70%	AIR	Grade 4 social studies	75%	OST	5%
Grade 5 English language arts	66%	PARCC	Grade 5 English language arts	73%	OST	7%
Grade 5 math	68%	PARCC	Grade 5 math	74%	OST	6%
Grade 5 science	62%	AIR	Grade 5 science	71%	OST	9%
Grade 6 English language arts	68%	PARCC	Grade 6 English language arts	74%	OST	6%
Grade 6 math	67%	PARCC	Grade 6 math	74%	OST	7%
Grade 6 social studies	56%	AIR	Grade 6 social studies	68%	OST	12%
Grade 7 English language arts	68%	PARCC	Grade 7 English language arts	74%	OST	6%
Grade 7 math	67%	PARCC	Grade 7 math	74%	OST	7%
Grade 8 English language arts	68%	PARCC	Grade 8 English language arts	74%	OST	6%
Grade 8 math	51%	PARCC	Grade 8 math	66%	OST	15%
Grade 8 science	60%	AIR	Grade 8 science	70%	OST	10%
Grade 10 English	80%	OGT	Grade 10 English	NA	NA	NA
Grade 10 writing	80%	OGT	Grade 10 writing	NA	NA	NA
Grade 10 math	80%	OGT	Grade 10 math	NA	NA	NA
Grade 10 science	80%	OGT	Grade 10 science	NA	NA	NA
Grade 10 social studies	80%	OGT	Grade 10 social studies	NA	NA	NA
Grade 11 English	85%	OGT	Grade 11 OGT reading	85%	OGT	0%
Grade 11 writing	85%	OGT	Grade 11 OGT writing	85%	OGT	0%
Grade 11 math	85%	OGT	Grade 11 OGT math	85%	OGT	0%
Grade 11 science	85%	OGT	Grade 11 OGT science	85%	OGT	0%
Grade 11 social studies	85%	OGT	Grade 11 OGT social studies	85%	OGT	0%
Algebra I end-of-course exam	64%	PARCC	Algebra I	72%	OST	8%
American history end-of-course exam	71%	AIR	American history	76%	OST	5%
American government end-of-course exam	67%	AIR	American government	74%	OST	7%
English I end-of-course exam	73%	PARCC	English I	77%	OST	4%
English II end-of-course exam	76%	PARCC	English II	78%	OST	2%
Geometry end-of-course exam	80%	PARCC	Geometry	80%	OST	0%
Physical science	63%	AIR	Physical science	72%	OST	9%
			Biology	72%	OST	72%

Things to Consider

- **Strengths:**

- Gap Closing (87% of State received F)
- Achievement Grade of B
- Graduation Rate
- Prepared for Success
- Overall Progress Data

- **Improvements:**

- Progress(Growth) Data in 5th (achievement was Higher than Sim. Dist.) and 6th ELA, 7th Grade Math, 6th Grade Science
- Achievement in ELA (above progress in 7th and at progress in 8th) at Middle School
- K-3 Literacy
- Meeting needs of Subgroups (ED, SWD, Gifted)

- **Points to Consider:**

- Tests changed for 3rd year in row
- Testing online
- Not all district testing same way
- Safe Harbor
- Cut Scores Increased